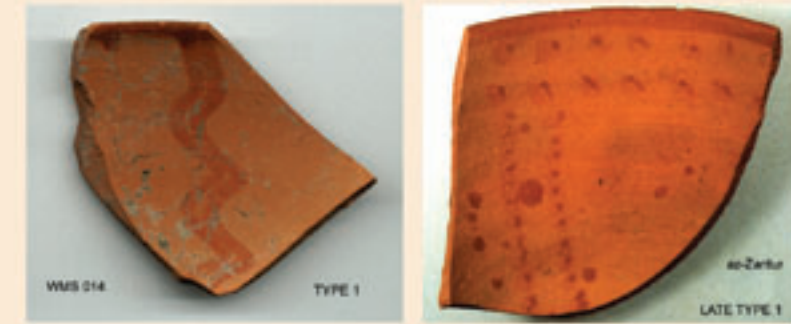


Nabataean Painted Fine Ware Typology

TYPE 1

First half of the first century BC; Type 1 is characterized by very fine but relatively thick ware with pink/light red fabric, red decoration. The shape is semi-globular bowl with ring base. Decoration consists of wide bands or wavy lines intersecting at the base, and fine dots arranged in bands.



TYPE 2

Later half of the first century BC; Type 2 is characterized by the following: Very fine (almost as thin as the classical wares), light red fabric, red decoration consisting of delicate naturalistic leaf radiating from the center. The shape was open rounded bowl with simple rim, ring bases are very rare.



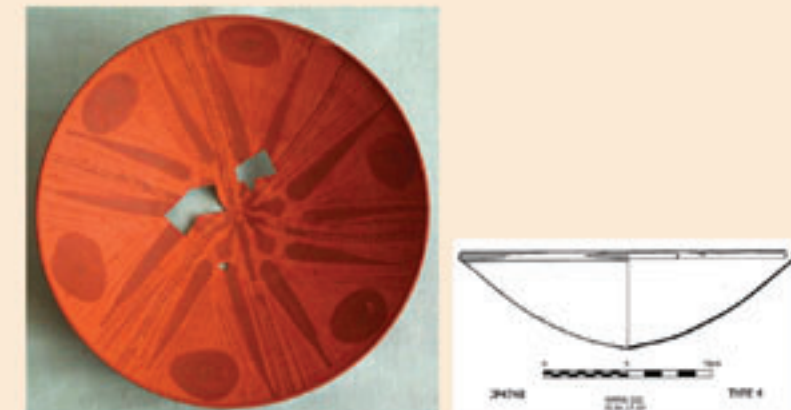
TYPE 3

First half of the first century AD; Type 3 ware are very fine and thin, light red and yellowish-red body color, deeper red decoration color. Complex decoration pattern with the naturalistic leaf designs evolving into wreaths and clusters. The wreaths were sometimes restricted to the rim area with the center filled with horizontal fields of small leaf clusters defined by lines and dots. Later, the fields were sometimes filled with lattice designs. Rounded bowl evolved into a "stepped" form and later into a more open form with simple, slightly inward curving rim.



TYPE 4

Middle-late first century AD; Type 4 is characterized by very fine, thin and metal hard fabric.. Light red and yellowish-red fabric color, with red and reddish-brown decoration. The decoration was stylized and varied but still mainly vegetal. The shape was mainly rounded bowls with small upright rim, but sometimes the rim was elongated and decorated with fine rouletting on the exterior. Painting on closed forms such as small vases and flared cup started with this type.



TYPE 5

End of the first and into the second century AD; Type 5 is characterized by a fine, very thin and metal hard body. The fabric is red and the decoration is brown and black. The decoration is now stylized and solid in comparison with the earlier types. Earlier examples have hatched backgrounds that disappear later. Animal representations especially birds eating bunches of grapes start to appear. The shape was open rounded bowls with small rolled rim while painted closed forms are more common.



TYPE 6

End of the second to the beginning of third through to the fifth/sixth century AD; Type 6 is characterized by progressive deterioration, with thicker walls and more temper in the fabrics. Fabric is red, sometimes with cream-fired surfaces. Duller black decoration consists of solid areas often applied on an obvious red slip. The shape was mainly open rounded bowl with small rolled rim, but decoration is also applied to other forms both open and closed that were usually undecorated.

