

IDENTIFICATION of ancient techniques

Archaeological – historical research

The main activity consisted in compiling a Corpus on ancient ceramic production based on archaeological sources and ethnoarchaeological data. We focused on the following:

Complete pictorial catalogue of Iconography relating to ancient ceramic production from black and red figured Attic pottery. This includes representations of vase formation in the wheel, decoration, transport and firing.



Documentation of the most common ceramic types of classical vases based on photographs, line drawings, measurements dimensions etc

Ethnoarchaeological information. Similarities and analogies of ancient pottery production with traditional ceramic workshops of the late 19th to 1st half of the 20th cent. This work was largely based on the archives of the Center for the Study of Traditional Pottery, a non-profit organisation supervised by the Greek Ministry of Culture.



Physicochemical – archaeometric research

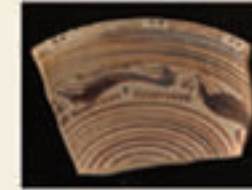
Development of a non-destructive analytical methodology. Quantification of the results obtained by non-destructive, portable XRF systems.

Chemical analysis (in collaboration with the Inst. of Nuclear Physics INP at NCSR Demokritos)

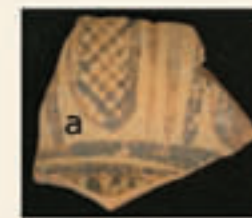
Mineralogical analysis (in collaboration with P1-NHRF): applicability of near IR technique

Analytical Characterization of Archaeological Artefacts

Chemical and mineralogical analysis of archaeological samples:



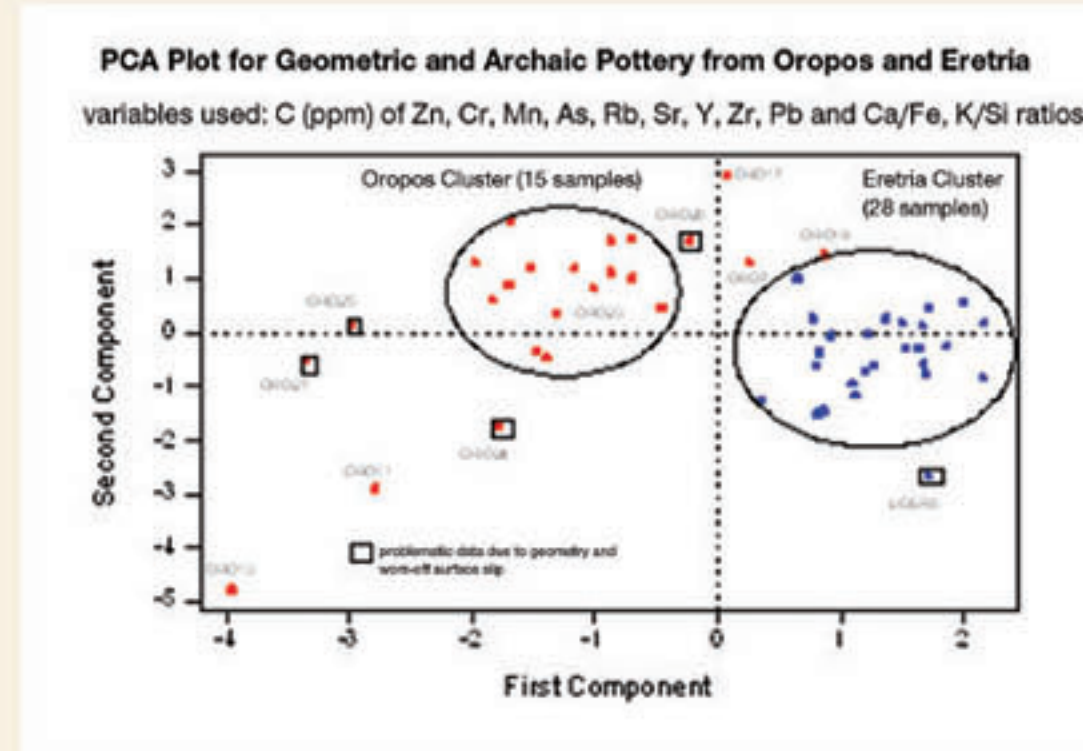
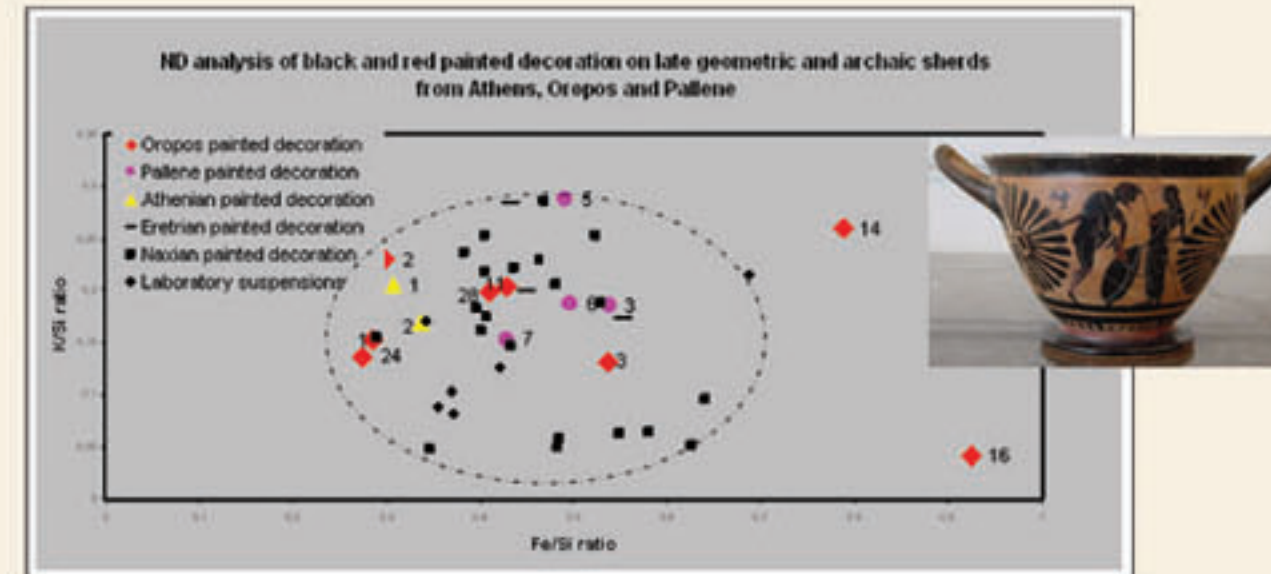
(37) geometric and Archaic decorated ceramic sherds from Attica (Oropos, Pallene, Merenta, Koropi) and Euboea;



Analysis (25) sherds from Oropos, statistical analysis



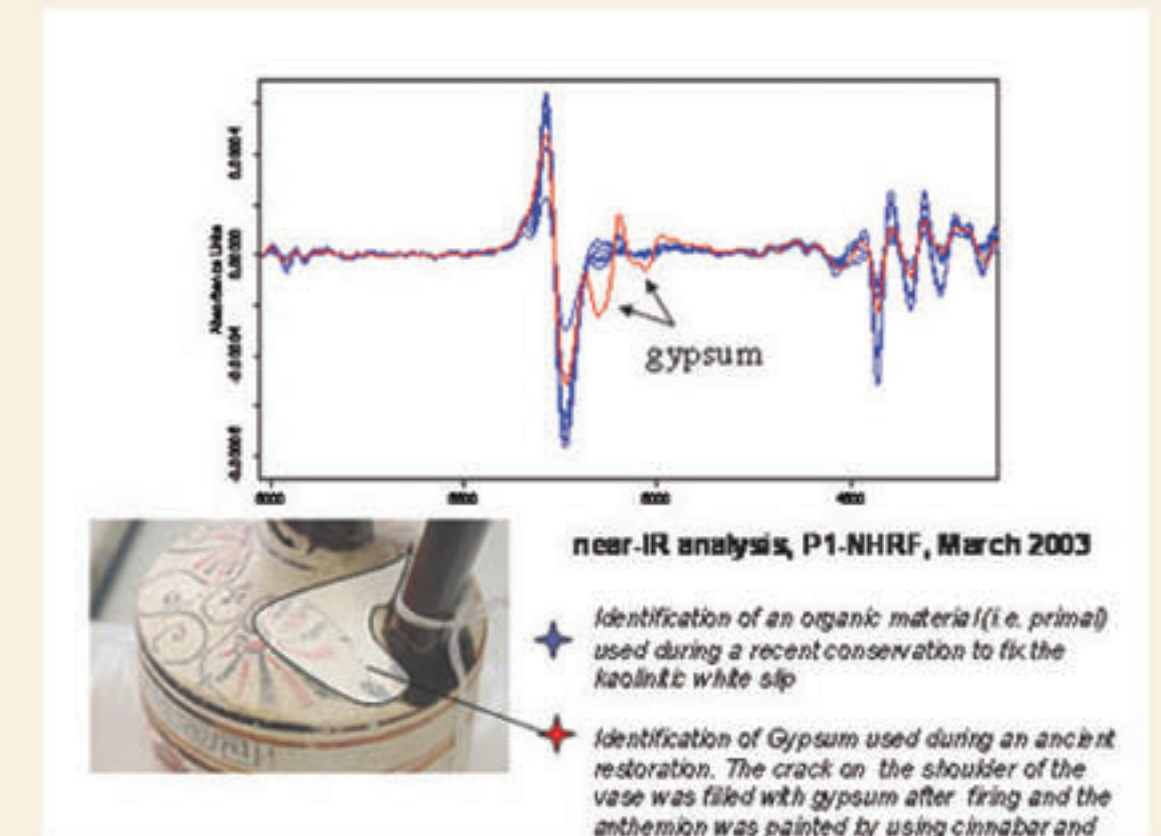
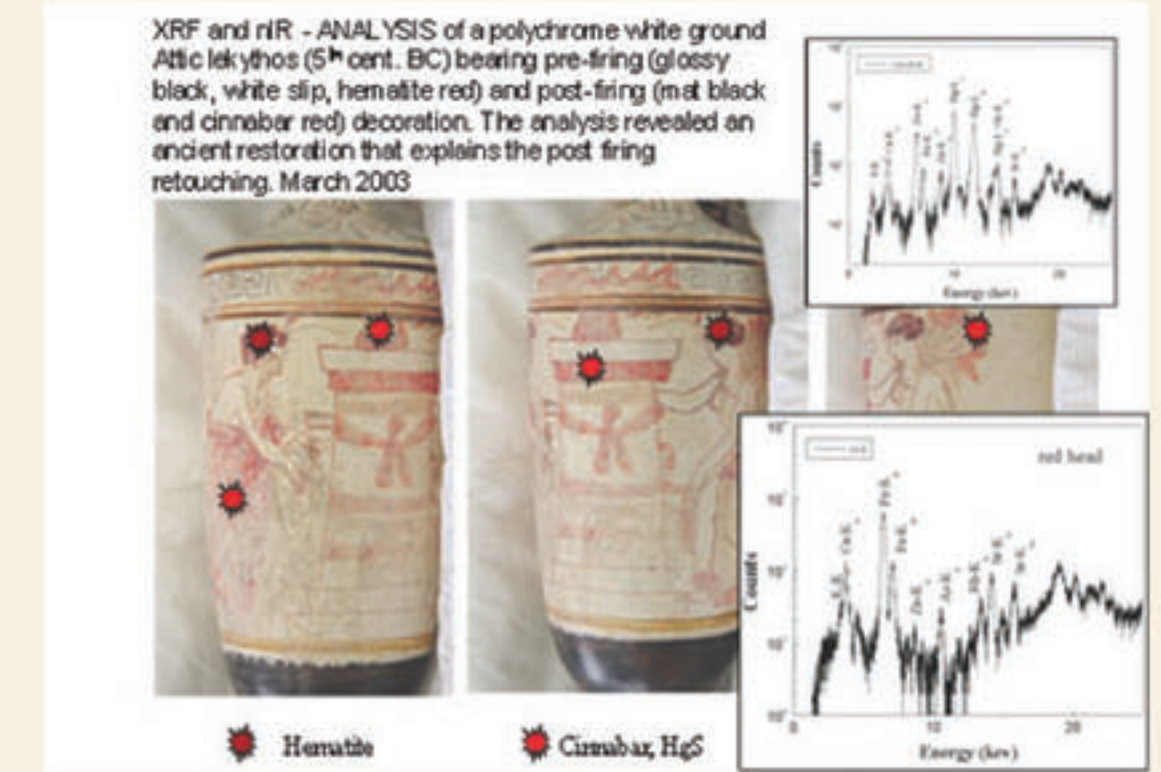
XRF analysis of the clay body and black gloss of (45) Attic BG samples from the ancient city of Athens (Keramikos site, Acropolis-Makrygianni). Comparison with similar sherds from the sites in North East-Attica (i.e Oropos, Vravra, Palleni, Coropi, Rafena).



Non-destructive analysis

Surface analysis of classical archaeological ceramic sherds from white ground lekythoi bearing polychrome decoration. Characterization of the white slip (kaolinite, saponite, quartzitic material) by near IR technique the applicability of which had been demonstrated in the first year of the project.

Analysis of valuable museum objects



People involved

Researchers: E. Aloupi, A. Yangaki, P. Valavanis, A. Karydas, Ch. Zarkadas
Students: I. Aslani, A. Chaviara

